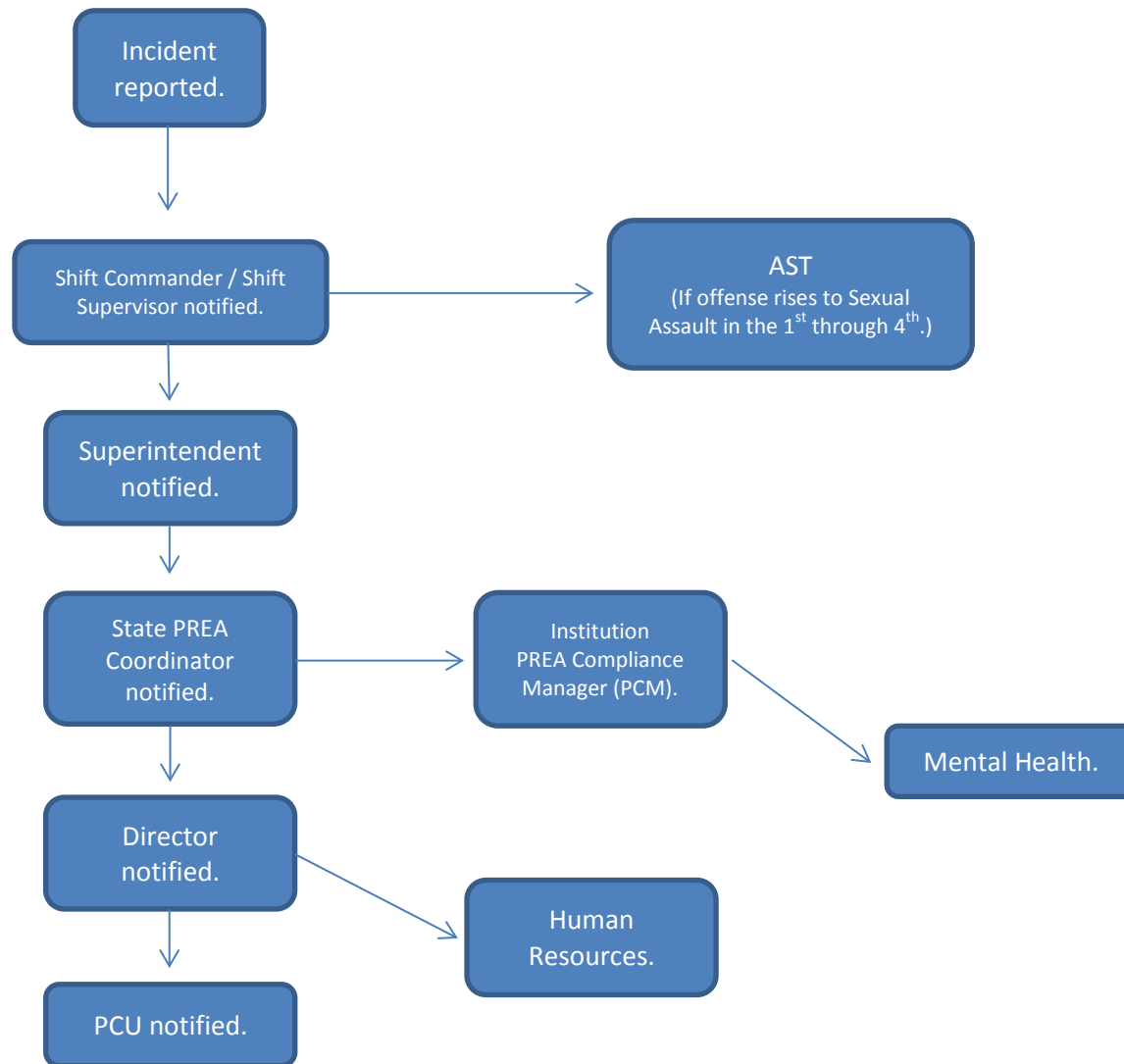




STATE OF ALASKA
DEPARTMENT OF CORRECTIONS

Flow Chart For Notification Of Sexual Abuse / Harassment:



The PREA Coordinator determines if the incident is sexual abuse (not defined by Alaska Statute), sexual harassment or staff misconduct case. If it rises to this level it is forwarded up the chain. It may also be returned for further initial investigation.