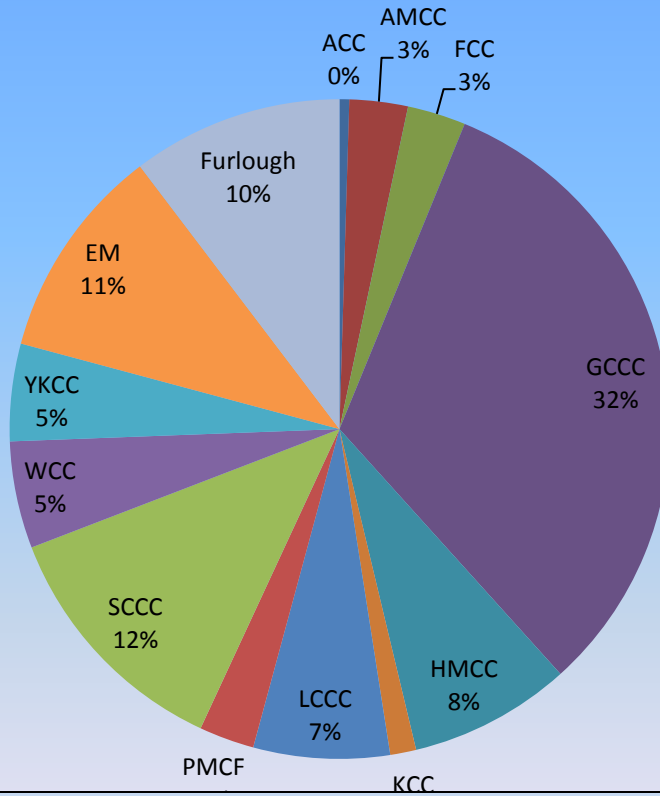
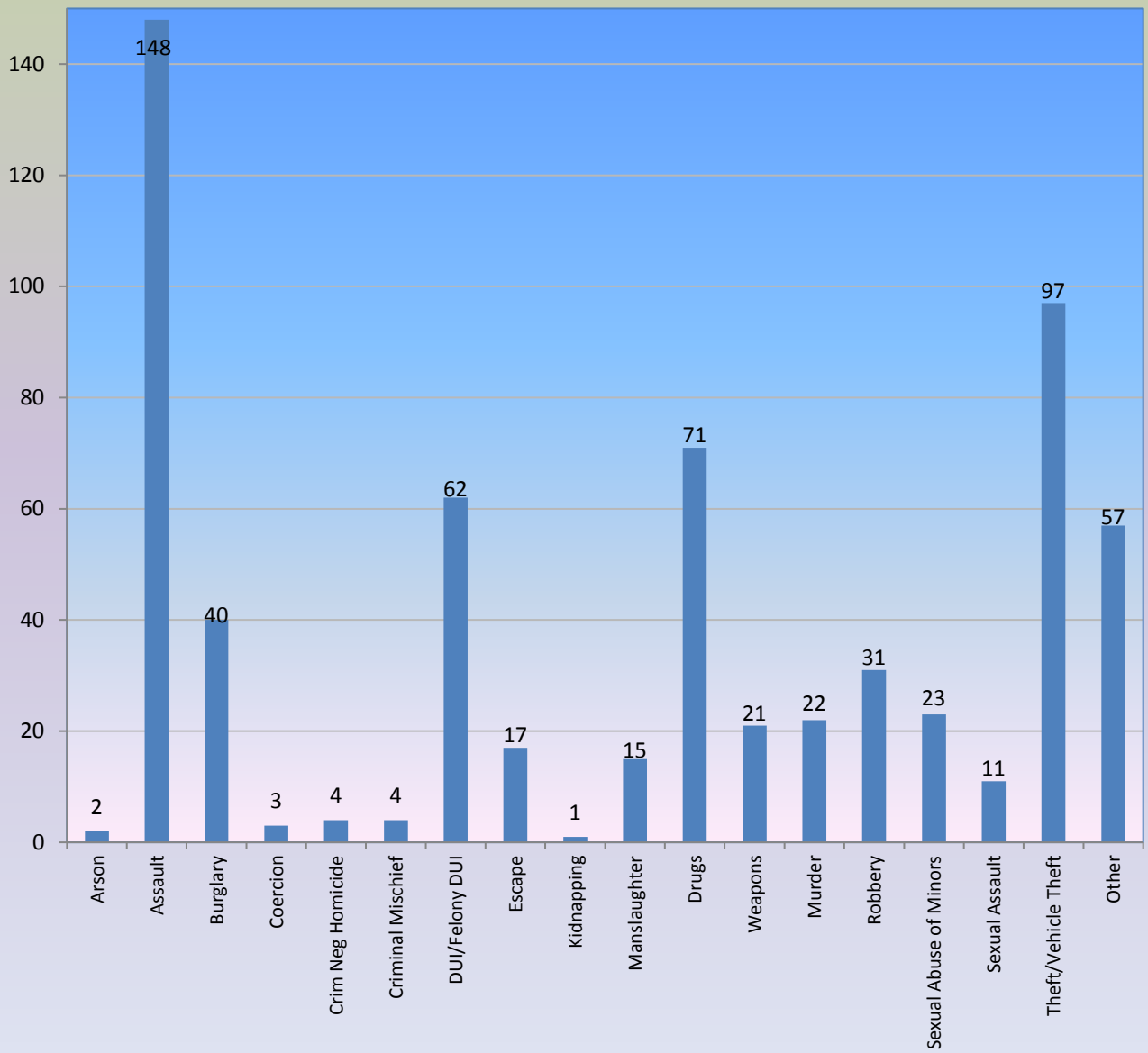


Discretionary Candidates per Institution 2017

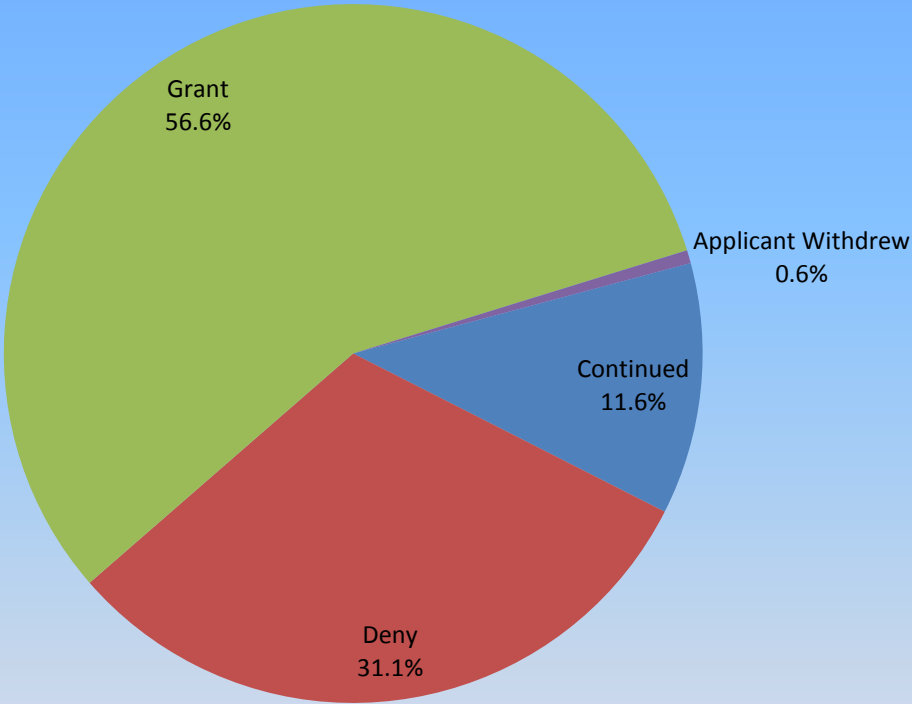


Goose Creek Correctional Center (GCCC) has the largest sentenced inmate population. With the implementation of SB 91 over 200 applications for discretionary parole were received from GCCC.

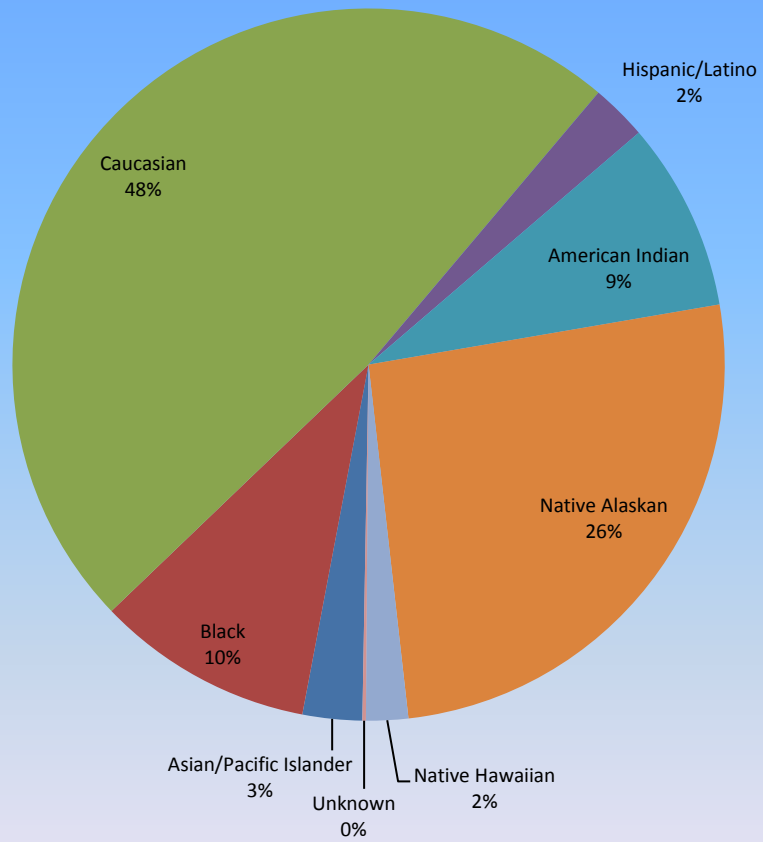
Primary Offenses for Discretionary Candidates 2017



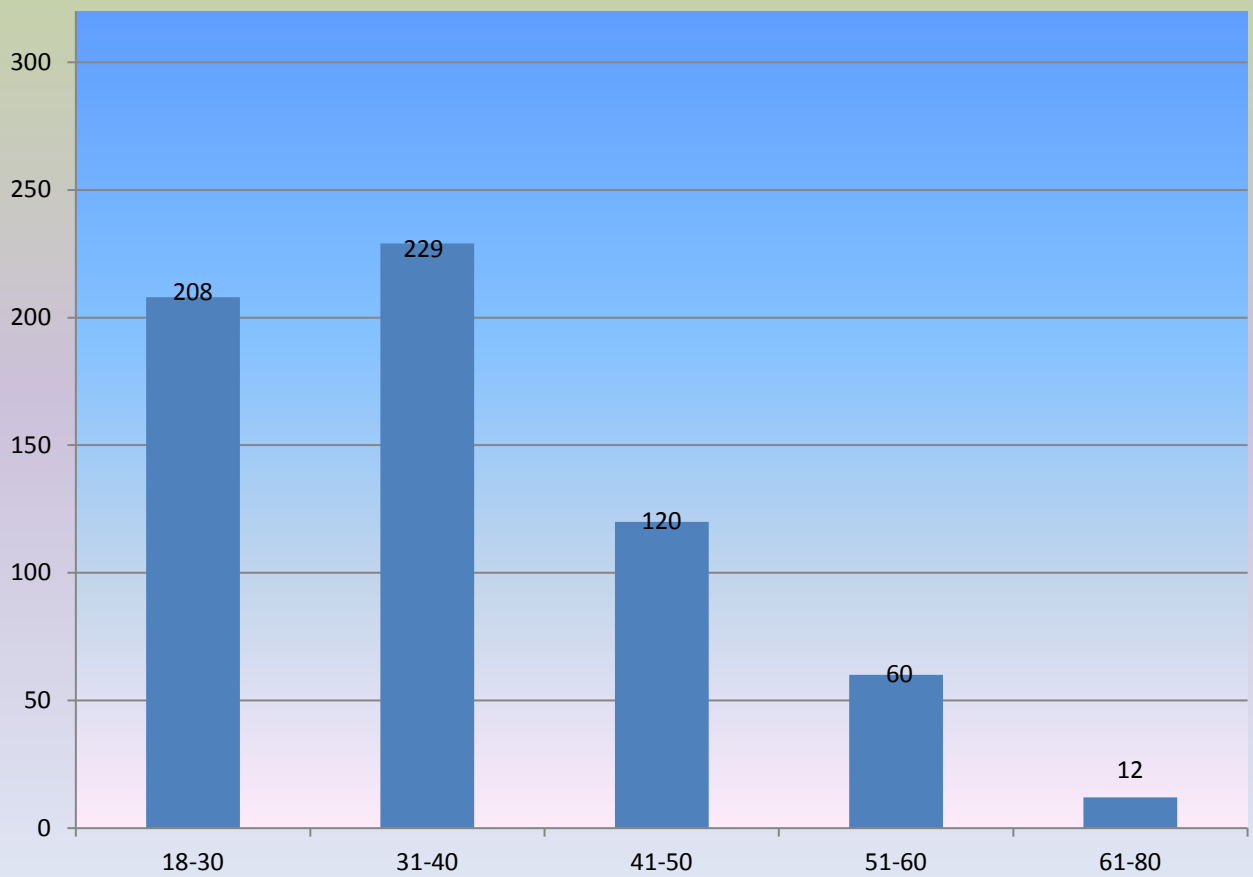
Discretionary Decisions 2017 (Inmates who appeared before the Board)



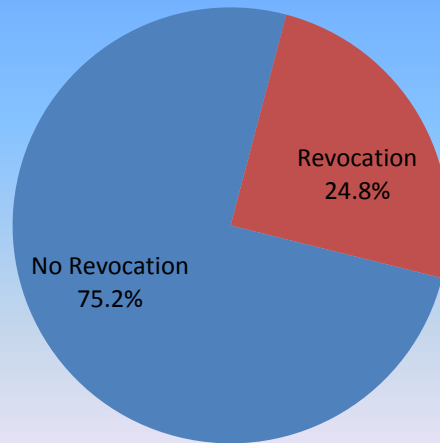
Discretionary Candidates by Race 2017



Discretionary Candidates by Age 2017

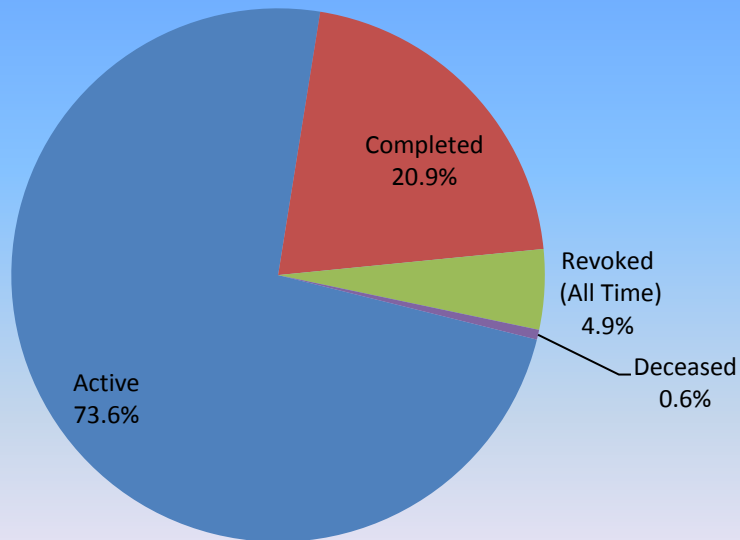


Parolees Released in 2017 Who Received Full or Partial Revocations



Does not include parolees with alleged violations which had not been adjudicated as of 1/1/18.

Outcomes for Releases in 2017



Releases to Parole 2017

